

Custom Asset Protection Product Guide



Perimaguard™
Asset Protection
Cable



Perimaguard™
Wireless Asset
Protection Cable



Perimaguard™
Asset Protection
Loop



THE PERIMAGUARD ASSET PROTECTION CABLE GIVES YOU RELIABLE 24/7 PROTECTION FOR YOUR HARD-TO-SECURE ASSETS:

- Works with any security system
- Wires directly into your security panel
- 15' sections allow easy access to inventory - **no more pulling chains through all of your outdoor assets!**
- Programmable to your specific needs
- Weatherproof, UV resistant cables



Glow in the dark arrows allow for easier use in dark conditions

WITH ASSET PROTECTION CABLES YOU CAN:

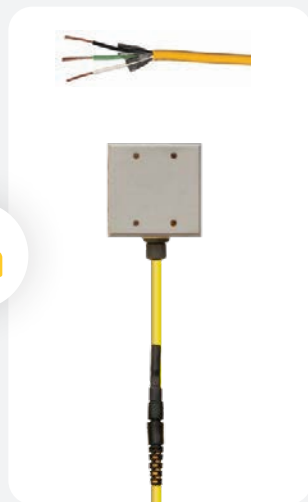
- Keep your products displayed outdoors where they sell most effectively
- Configure your security system to react differently during/after store hours
- Daisy chain segments to create a protection loop up to 3,000 feet long

To use the Asset Protection Cable, simply thread the cables through your inventory and activate the zone. If any inventory is improperly removed from the zone, the Asset Protection Cable system will trigger your security panel to any result you program.

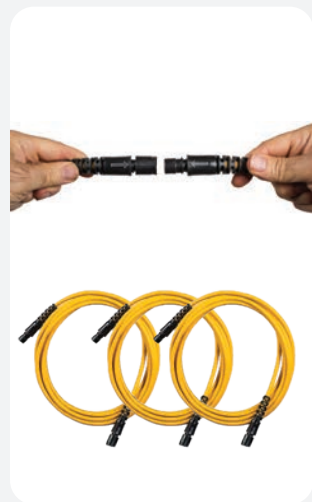
HOW ARE PERIMAGUARD ASSET PROTECTION CABLES INSTALLED?



Dry contact relay at burg or access control panel



Splice 22/4 to Perimaguard Cable



Run daisy chained Asset Protection Cables through outdoor assets



Finish by splicing an EOL resistor

SAVING THAT ADD UP!

The Perimaguard system from Paige saves a large retail client \$45,000,000 annually.

Calculated in 2016, based on 1,500 store locations.



EMPLOYEE TIME



DISCOUNTS FOR DAMAGE



LOSS



WITH THE PERIMAGUARD WIRELESS ASSET PROTECTION CABLE YOU GET THE BENEFITS OF A HARDWIRED SYSTEM PLUS:

- Reduced installation costs
- Ability for the cables to move with your inventory/assets
- Protection of up to 32 loops of inventory per wireless receiver
- Wireless receiver powered by Inovonics works with virtually every panel on the market.



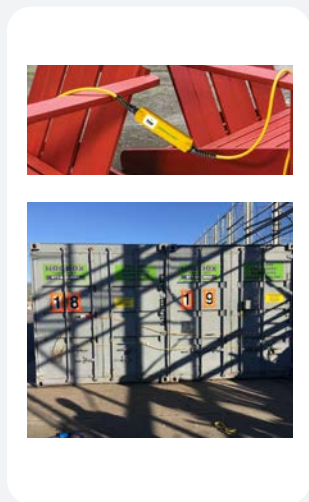
HOW ARE PERIMAGUARD WIRELESS ASSET PROTECTION CABLE SYSTEMS INSTALLED?



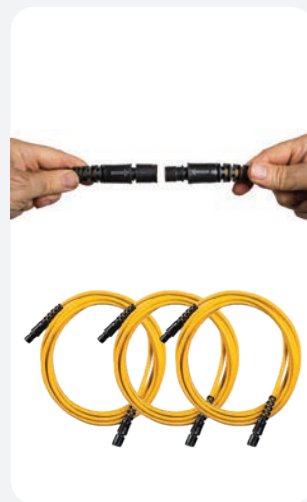
Inovonics receiver (or natively from panel)



Wireless range 850-2000 feet based on conditions



Attach via cable, magnets, or "belt loops"



Add up to 17 Asset Protection cables to make larger loops



HOW IT WORKS:

The Wireless Asset Protection Cable works by sending a signal from the inline transmitter to the receiver panel, which is hardwired into your existing burglar alarm panel. If you need a larger loop, simply add up to 17 Asset Protection cables onto the loop to expand the coverage area. You can also add an optional remote to give team members an easy way to bypass the zone.



Bringing your security system from your door to the edge of your property is a tough job. Many systems are clumsy, expensive, and prone to false alarms. The Perimaguard systems are the most reliable, flexible, and user-friendly method of securing outdoor "LPRC Zone 4" assets including merchandise, storage containers, loading docks, roof access ladders, and more.



THE PERIMAGUARD ASSET PROTECTION LOOP WAS DESIGNED TO ELIMINATE THE FALSE ALARMS THAT PLAGUE TYPICAL GATE MONITORING SYSTEMS.

- Uses the same cabling and connectors as the Asset Protection Cable
- Protects gates, loading docks, overhead doors, and more
- Comes with a 10' whip
- Housed in the same rugged, plastic material used to make football helmets

However you decide to use it, you won't need to worry about false alarms and you can rest assured that your assets are secure.

HOW ARE PERIMAGUARD ASSET PROTECTION LOOPS INSTALLED?



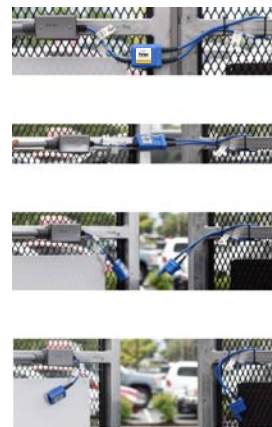
Male end opens and secures around post



EOL Resistor added as close to gate as possible



Visible, rugged, immune from false alarms

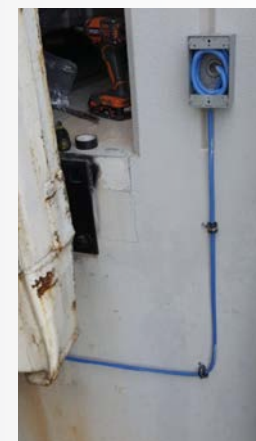


Pulls apart without breaking



WHAT ELSE CAN THESE PROTECT?

The Perimaguard Asset Protection Loop is designed to be flexible for a variety of creative uses. For example, it can be used for loading dock security. By attaching the fixed side below the loading dock bumper and the loop around a truck's overhead door handle, the system will alarm if the door opens or the truck pulls away.



Splice from 22/4 to Asset Protection Loop whip



Fixed (female) side mounted below bumper at loading dock



Male (loop) opens for temporary use on trucks



If door opens or truck pulls away, system alarms.

Perimaguard Asset Protection Cable	259021607
Perimaguard Asset Protection Cable 5-Pack	259031607
Perimaguard Wireless Asset Protection	259041607
Perimaguard Wireless Asset Protection Cold Weather Kit	259051604
Perimaguard Asset Protection Loop	259011606

Custom AP Products use patented technology


US Patent # 10,608,396

US Patent # 9,595,176

US Patent # 9,640,051



 200 Sheffield St, Suite 302,
Mountainside, NJ 07092

 800.327.2443

 www.paigedatacom.com/custom-ap